



GLOBAL X ETFs RESEARCH

Introducing the Global X Data Center REITs & Digital Infrastructure ETF (VPN)

On October 29th, 2020, we introduced the **Global X Data Center REITs & Digital Infrastructure ETF (VPN)** on Nasdaq. VPN seeks to invest in companies that operate data center REITs and other digital infrastructure expected to benefit from the development of 5G and next generation communication networks.

Data Centers & Cellular Towers: The Backbone of Our Digital World

A confluence of multiple digital technologies are expected to define this decade: billions of internet connected devices will transmit zettabytes of data across blazing fast 5G networks, which will be stored or analyzed in the cloud by sophisticated artificial intelligence algorithms.

As much as these technologies appear to occur effortlessly and out of thin air, they require an extensive network of physical infrastructure and hardware. Cellular towers transmit and receive radio signals to wireless devices, while data centers host servers that store and process information. Together, they form the backbone of the digital and wireless technologies that we use daily.

For investors, data centers and cellular towers marry elements of growth-oriented technology investing, with income-oriented real estate. As disruptive technologies like the Internet of Things, Artificial Intelligence, and Video Games & Esports require vast amounts of data storage and processing, demand for data centers and cell towers could continue to surge, along with hardware that powers these structures. Yet many of these companies operate as real estate investment trusts (REITs), distributing at least 90% of their taxable income to shareholders as dividends. With interest rates at record lows and stalling global economic growth, data centers and cell towers could offer attractive growth and income characteristics to investors' portfolios.

	Industry Revenue (Trailing 12-months)	EBITDA Margin (Trailing 12-months)	Dividend Yield	Estimated Revenue Growth (12-months)
Data Center REITs	\$25.4 billion	49%	2.7%	9.6%
Cellular Tower REITs	\$38.6 billion	72%	1.7%	2.4%
All REITs*	–	56%	3.5%	1.4%

Source: Global X ETFs.

Note: As of October 19th, 2020. Data sourced from FactSet, Bloomberg, NAREIT. Revenue figures are based on FactSet's RBICS and exclude private companies. Estimated sales growth figures are consensus estimates over the next 12 months. *Based on FTSE EPRA NAREIT Global REITs Index.

Data Centers: The Cloud is on the Ground

Data centers are traditionally large, windowless, warehouse-like buildings that host their tenant's networked computer servers. In exchange for regular rent payments and fees, data centers provide physical space, cooling, power management, and security to their tenants, but rarely own or operate their own servers. Unlike other REITs, data center leases are primarily based on power capacity usage (\$/kW) rather than square footage. This business model gives tenants significant flexibility to scale their infrastructure and computing needs.

With widespread digitalization across the economy, a data center's tenants can range from big tech companies, to government agencies, financial services firms, or health care providers. A large and growing share of data center revenue comes from leasing to hyperscalers like Google, Amazon, Facebook, IBM,

Authored by:

Pedro Palandrani
Research Analyst

Date: October 29, 2020
Topic: **Thematic**



Related ETFs

Please click below for fund holdings and important performance information.

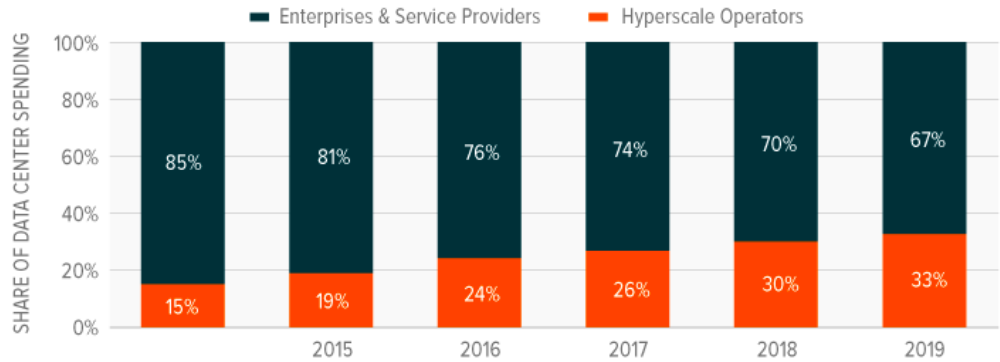
VPN – Global X Data Center REITs & Digital Infrastructure ETF



Alibaba, Oracle and Microsoft. While these companies often directly own and operate their own data centers, they also lease facilities from data center providers such as Equinix, Digital Realty, CyrusOne, CoreSite Realty, QTS Realty, Switch, GDS Holdings, NextDC, KeppelDC, 21Vianet Group, and SUNeVision Holdings.

HYPERSCALERS CONTINUE TO GROW AS % OF TOTAL DATA CENTER SPENDING

Source: Synergy Research Group, 2019.



Like much of the real estate world, the physical location of a data center plays an important role in its ability to command premium rents. First, approximately 20% of the data center costs come from power usage, a cost that is typically passed on to tenants. Therefore, locating a data center in an area that offers low energy costs can be attractive to customers. Second, the proximity of data centers to populous areas can greatly reduce latency, or the time it takes for information to travel to and from the data center – a feature that is particularly important for disruptive technologies like online gaming and remote surgery. Third, access to multiple internet service providers (ISPs) and interconnection across multiple tenants can play an important role as well, creating a ‘network effect’ within the data center itself. Given that it can take years to permit, build, and lease a new data center, existing properties in attractive locations can command high rents, and competition is somewhat limited. In addition, high switching costs associated with moving, re-installing, and testing servers in a new location means lease renewal rates are quite high.

Wholesale vs. Retail Data Centers

Data center operators primarily focus on either wholesale or retail offerings.

Wholesale: Wholesale data center providers offer limited services – space, cooling, security, and power – to sophisticated tenants that manage their own networking equipment, either for their own uses or to sub-lease to their own customers. Wholesale contracts tend to be longer term (often 5 to 15 years) and include built in fee escalators and options for renewal.¹

Wholesale	<ul style="list-style-type: none"> • Solution to scale to very large compute deployments • Long term contracts over 5 to 15 years • Customized data center solutions and environments • Customers tend to have their own on-site staff
------------------	--

Retail Colocation: Retail data center operators focus on leasing to numerous smaller and less sophisticated clients. These providers offer more built-out solutions, including racks, cages, and cabling, and



typically offer shorter term contracts in the range of 3 to 5 years.² A single retail operator may have dozens of clients in a single data center.

Retail Colocation	<ul style="list-style-type: none"> • Focus on numerous small to medium deployments • Shorter term contracts, typically 3 to 5 years • More consistent designs and environments • Leverage skilled on-site customer support
--------------------------	--

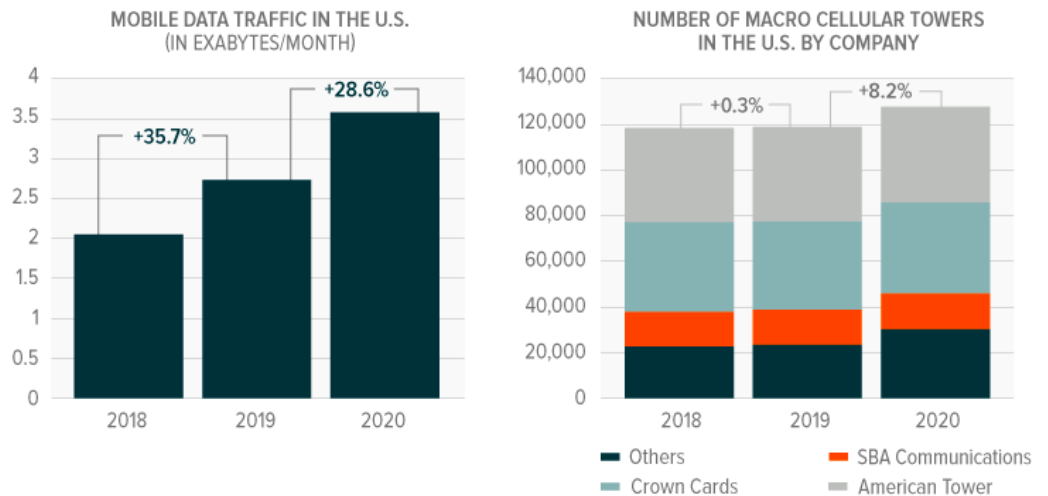
Cellular Towers: Wireless Highways

Similar to data centers, cellular towers own and operate critical physical infrastructure for the digital world, including wireless and broadcast communications towers. In the U.S., cell towers lease vertical space on the tower and land underneath primarily to major telecom providers like AT&T, Verizon, the T-Mobile/Sprint merged entity, and, more recently, Dish Network.³

Even though the number of potential customers is limited to a handful of telecoms, the need for towers is greater than ever with the rapid ascent of smart phones and the internet of things. Today, there are approximately 128,000 macro cell towers in the U.S., but each tower only has so much range and capacity. A typical cellphone has only enough power to reach a tower up to 5-7 miles away, and a single LTE cell can only manage around 200 connections per 5MHz of spectrum before speed begins to stall.^{4;5} With 3.2 billion active smartphone users globally – and counting – tower demand is expected to remain robust.⁶ But construction and permitting hurdles often limit expansion, making existing towers increasingly valuable. For example, suppliers of macro cell towers in the US added approximately 8% tower capacity from 2019 to 2020.⁷ But that lags substantially behind the 29% growth of mobile data per smartphone in North America.⁸

MOBILE DATA TRAFFIC GROWTH CONTINUES TO OUTPACE MACRO TOWER GROWTH

Source: Global X ETFs, Ericsson, Wireless Estimator 2020. Totals do not include distributed antenna systems (DAS) and small cells.



Given that wireless towers face data and capacity constraints, tower operators are increasingly developing small cell networks or small low-powered-antennas (nodes) to alleviate congestion. Small cells are often attached to utility poles or streetlights and connected to fiber optic cables to enhance connectivity in densely populated areas.⁹ Some estimates expect small cells in the U.S. to grow eight-fold from about 100,000 in

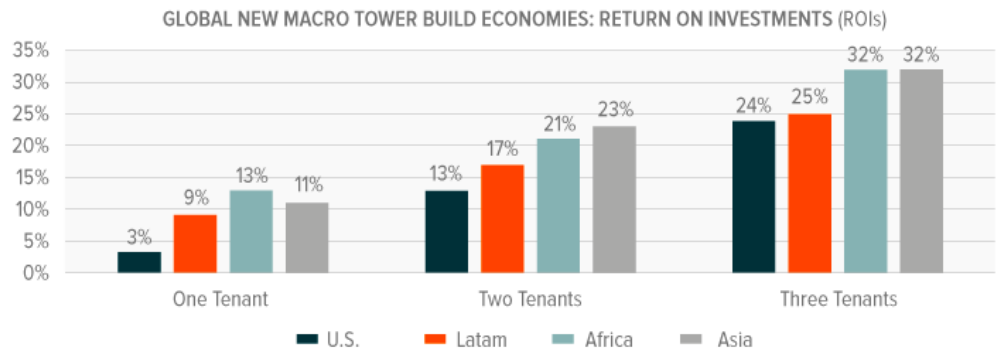


2020 to 800,000 by 2026 as new technologies like 5G and autonomous vehicles rapidly accelerate data demands.^{10,11}

Tower rents vary by property location, leased vertical square footage on the tower, and the weight on tower. Cell tower leases generally range from 5–10 years.¹² Importantly, most contracts are non-cancellable and have escalators that increase lease payment by approximately 3% annually.¹³ Largely fixed operating costs support these long-term contracts. Most costs come from monitoring the tower, insurance, taxes, utilities, maintenance. In some cases, ground rent is a cost, depending on whether the tower provider owns or rents the land beneath the tower. But these costs tend to be fixed whether a tower has one tenant or five - so as the number of tenants increases, revenue grows, but costs remain relatively flat. A single cell tower often hosts four or five telecom tenants, so the multi-tenant structure helps diversify long-term revenue streams and increases profitability.

DUE TO HIGH FIXED COSTS, ADDING TENANTS DRAMATICALLY INCREASES PROFITABILITY

Source: Amrican Tower, 2020. For illustrative purposes only. Does not reflect any American Tower data.

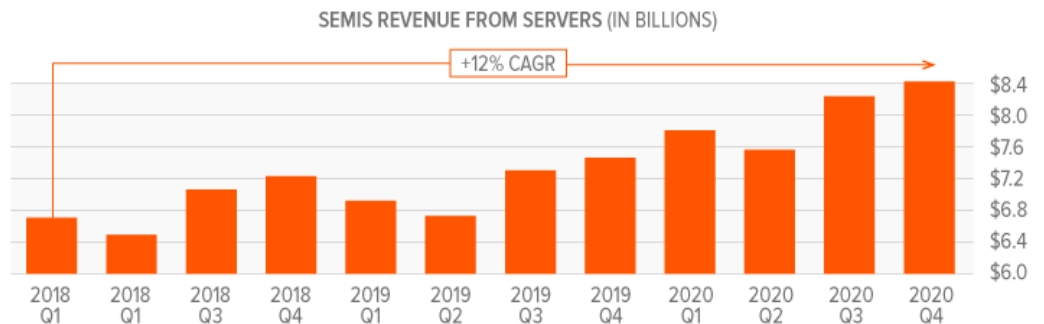


Digital Infrastructure Hardware: Powering the Shift to Digitalization

The world’s growing reliance on connectivity and cloud computing makes digital infrastructure more important than ever. Memory and processing power are fundamental pillars of this ecosystem, so as demand for data centers grows, so too should demand for the hardware that goes inside them. In fact, semiconductor revenue within the server segment grew by approximately 12% annually since 2018.¹⁴

COMPUTE AND STORAGE DEMANDS ARE COMMANDING ADDITIONAL SEMICONDUCTOR REVENUE IN SERVERS

Source: Global X ETFs, Bloomberg. Semiconductors Revenue by End Markets. October 2020.



Note: CAGR = Compounded Annual Growth Rate



For decades, servers were powered by central processing units (CPUs) that efficiently computed single threads of information. But with data centers expected to handle complex AI algorithms or billions of daily internet queries, processors are evolving. In recent years, graphic processing units (GPUs) became the state of the art hardware due to their ability to process multiple computations simultaneously.¹⁵ In the future, data-centric designs, known as data processing units (DPUs), could be the next generation of computational chips. DPUs enable a variety of data center solutions, including storing, computing, and data security at the highest speeds while lowering cost and time by analyzing data at the edge.¹⁶

As you can tell from the description above, data center hardware ages quickly as computing requirements evolve. Amazon, for example, estimates a 4-year useful life for their AWS servers.¹⁷ A hyperscale data center holds at least 5,000 servers, and can often reach hundreds of thousands of servers, representing tens of millions of dollars in IT hardware. Therefore, the strong demand for data center hardware stems from both the addition of new data centers around the world, as well as the ongoing maintenance and upgrades within existing data centers to support the latest technologies.

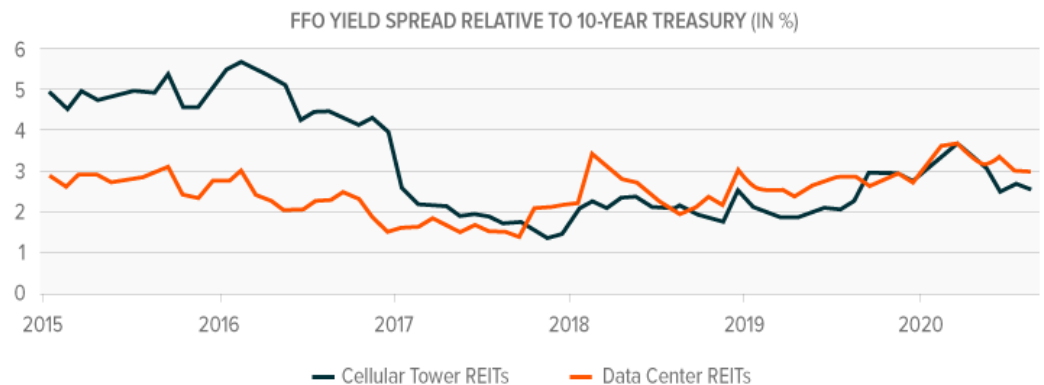
Digital Infrastructure: Real Estate with Income & Growth Potential

From a portfolio perspective, digital infrastructure can offer compelling growth and income characteristics amid the current environment. With interest rates near zero in most major developed economies and a stalling macroeconomic backdrop, investors are increasingly looking for alternatives to fixed income that can provide meaningful yield and upside opportunity.

The spread between the Fund from Operations (FFO) yield for data centers and cellular towers versus the 10-year US Treasury has generally increased over the last three years to approximately 300 basis points. FFO offers a better way to determine a real estate investment’s operating cash flow than earnings because depreciation and amortization (non-cash expenses) are deducted from net income. A rising spread versus 10-year US Treasuries can indicate that digital infrastructure is exhibiting improving valuations.

FUNDS FROM OPERATIONS (FFO) YIELDS REMAIN ATTRACTIVE ON A RELATIVE BASIS TO U.S. TREASURIES

Source: Global X ETFs. Represented by the average of U.S. REITs for each segment. Data Sourced from Bloomberg, August 31st, 2020. Data Center REITs include Equinix, Digital Realty, QTS Realty, CoreSite Realty, and CyrusOne. Cellular Tower REITs include American Tower, Crown Castle, and SBA Communications.



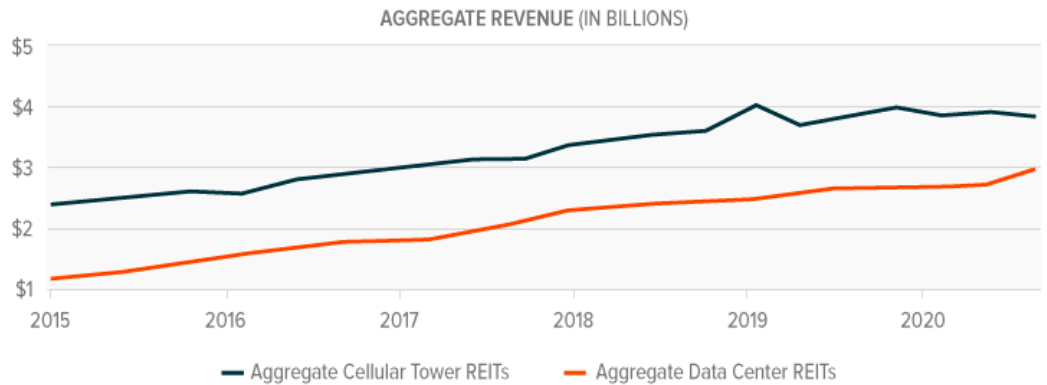
Beyond income, digital infrastructure could continue to experience strong growth as it is well-positioned to benefit from the changing economic landscape. Traditional real estate segments such as shopping malls, offices, and apartment buildings face secular disruptions from emerging technologies and new consumer behaviors. Accelerated by the COVID-19 pandemic, consumers are increasingly opting to shop online, work from home, and socialize via video and gaming apps. These changing patterns are shifting real estate



demand from large public areas and towards our private residences. Occurring in parallel with this shift is increasing demand for the digital infrastructure that powers this remote connectivity.

REVENUES CONTINUES TO SHOW AN UPWARD TRAJECTORY AS THE COMPANIES BENEFIT FROM THE GROWTH OF CLOUD COMPUTING AND WIRELESS NETWORKS

Source: Global X ETFs. Represented by the average of U.S. REITs for each segment. Data sourced from Bloomberg, October 2020. Data Center REITs include Equinix, Digital Realty, QTS Realty, CoreSite Realty, and CyrusOne. Cellular Tower REITs include American Tower, Crown Castle, and SBA Communications.



Digital infrastructure sits at the intersection of numerous disruptive trends, from increasing connectivity through the growth of 5G and the internet of things, to the rise of big data and artificial intelligence, and the transition to software delivered seamlessly through the cloud. We believe that such infrastructure is therefore essential to 21st century growth and can play a multi-faceted role in investors’ portfolios that could offer income and growth characteristics.



1. SiriusEdge, "10 Keys to Choosing a Data Center Colocation Provider," Mar 13, 2016.
2. Ibid.
3. American Tower, "Introduction to the Tower Industry and American Tower," Jun 30, 2020.
4. SolidSignal, "How far away can your phone be from the tower?," Apr 15, 2019.
5. ExtremeTech, "ExtremeTech Explains: What is LTE?," Apr 1, 2015.
6. Newzoo, "Newzoo's Global Mobile Market Report: Insights into the World's 3.2 Billion Smartphone Users, the Devices They Use & the Mobile Games They Play," Sep 17, 2019.
7. Wireless Estimator, "Top 100 Tower Companies in the U.S.," Sep 11, 2020.
8. Ericsson, "Ericsson Mobility Report," Jun 2020.
9. Ibid.
10. Barron's, "5G Is Coming. Buy These Two Cell Tower REITs to Play the Trend.," May 24, 2020.
11. Light Reading, "Inside the 5G Small Cell Opportunity: Big & Messy," May 13, 2019.
12. American Tower, (n3)
13. American Tower, (n3)
14. Bloomberg Data as of October 2020.
15. Nvidia, "Maximizing Data Center Productivity With Application Workload Analysis," Jun 2018.
16. Mellanox, "Welcome to the DPU-Enabled Data Revolution Era," Mar 30, 2020.
17. ZDNet, "Four Data Center Spending Trends You Need to Know," Feb 14, 2020.

SEI Investments Distribution Co. (1 Freedom Valley Drive, Oaks, PA, 19456) is the distributor for the Global X Funds.

Investing involves risk, including the possible loss of principal. The investable universe of companies in which VPN may invest may be limited. Data Center REITs and Digital Infrastructure Companies are subject to risks associated with the real estate market, changes in demand for wireless infrastructure and connectivity, rapid product obsolescence, government regulations, and external risks including natural disasters and cyberattacks. International investments may involve risk of capital loss from unfavorable fluctuation in currency values, from the differences in generally accepted accounting principles or from social, economic or political instability in other nations. VPN is non-diversified. Shares of ETFs are bought and sold at market price (not NAV) and are not individually redeemed from the Fund. Brokerage commissions will reduce returns. Indices are unmanaged and do not include the effect of fees, expenses or sales charges. One cannot invest directly in an index.

Carefully consider the funds' investment objectives, risks, and charges and expenses. This and other information can be found in the funds' full or summary prospectuses, which may be obtained at globalxetfs.com. Please read the prospectus carefully before investing.

Global X Management Company LLC serves as an advisor to Global X Funds. The Funds are distributed by SEI Investments Distribution Co. (SIDCO), which is not affiliated with Global X Management Company LLC. Global X Funds are not sponsored, endorsed, issued, sold or promoted by Solactive AG nor does Solactive AG make any representations regarding the advisability of investing in the Global X Funds. Neither SIDCO nor Global X is affiliated with Solactive AG.

